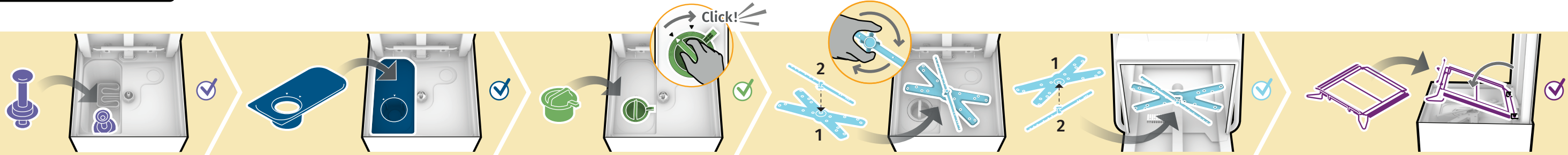
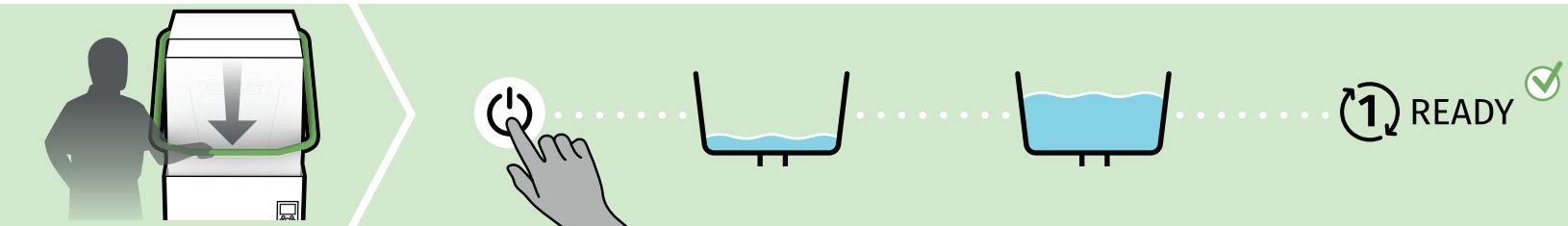


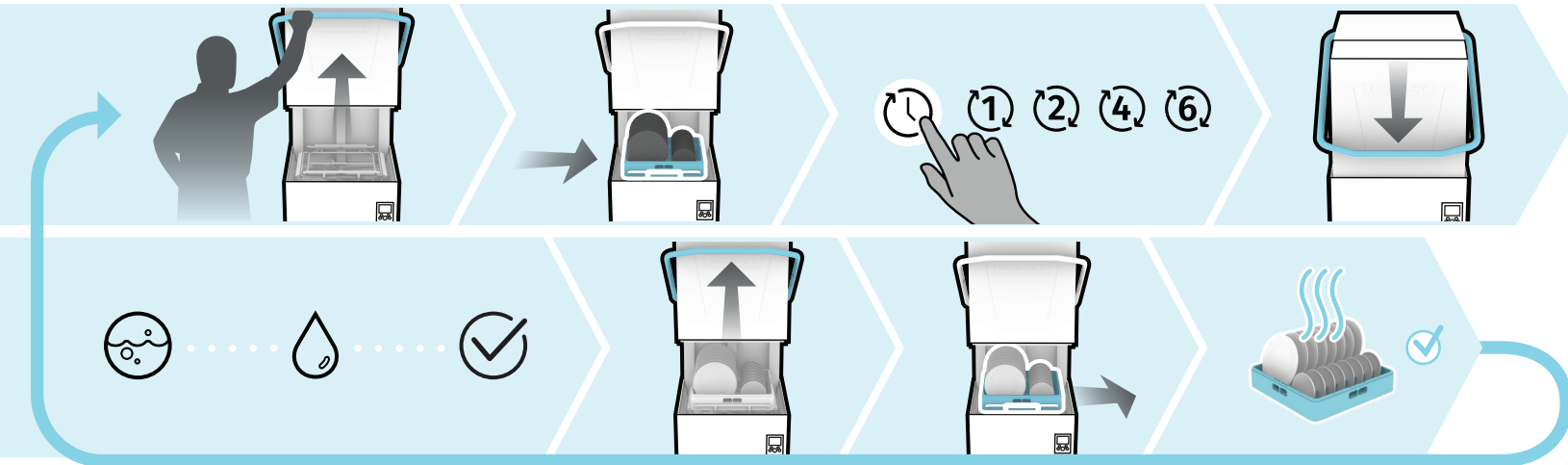
Assemble
Armar
Assembler



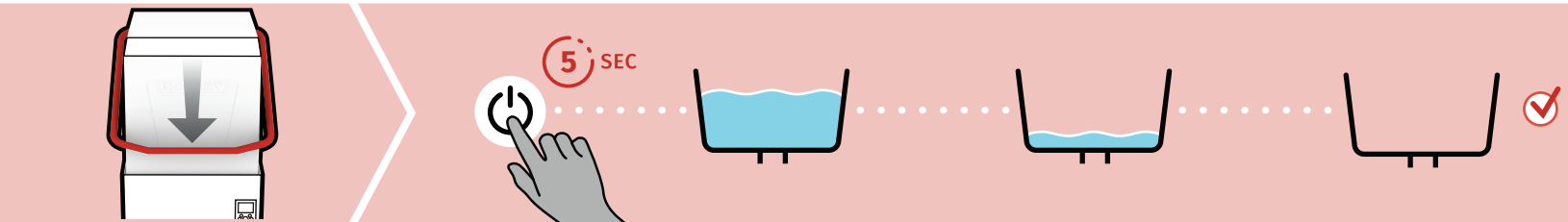
Startup
Puesta en marcha
Mise en marche



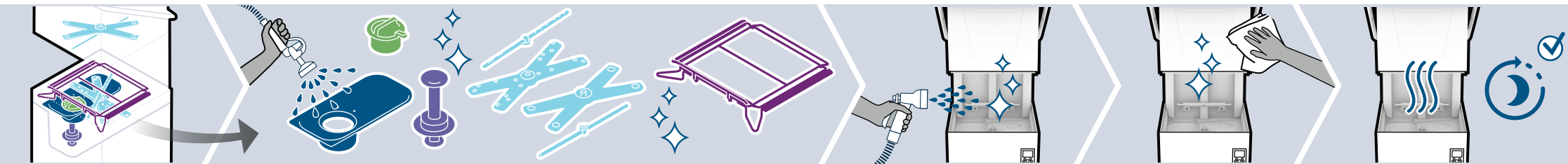
Cycle
Ciclo
Cycle



Shut Down
Apagar
Fermeture

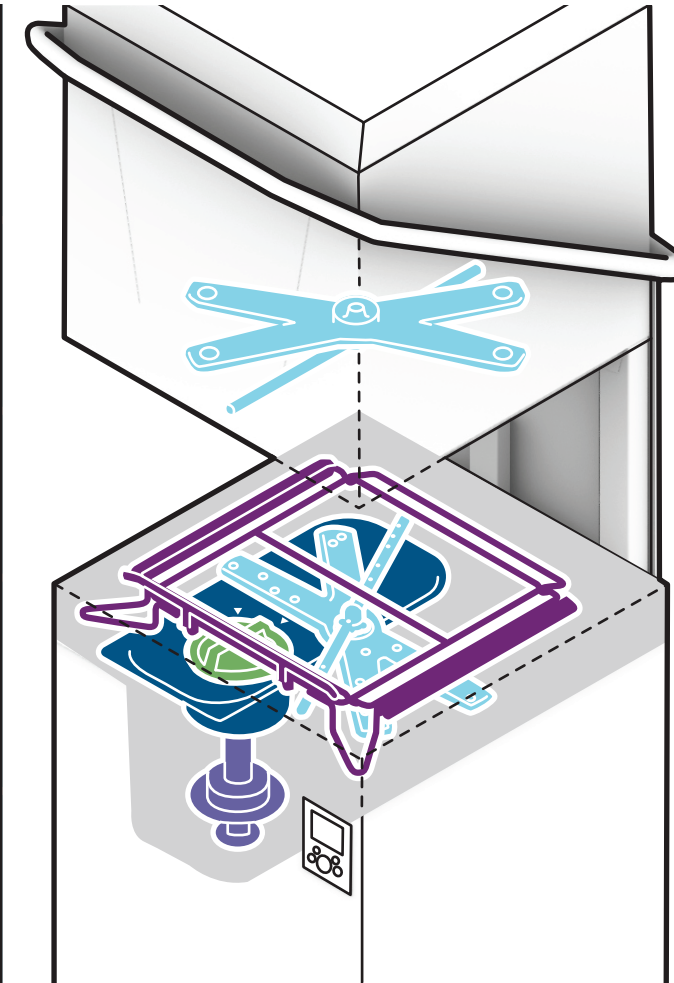


Clean Up
Limpiar
Nettoyer



Lockouts | Bloqueos | Verrouillages

Notification number XXX	Notification number XXX
077 DETERGENT EMPTY	084 RINSE TEMP TOO LOW
079 SANITIZER EMPTY	090 WASH TEMP TOO LOW
	WASH/RINSE <120°F !
	OFF ON
	5 SEC
	WASH/RINSE ≥120°F



INSTRUCTIONAL VIDEOS
VIDEOS INSTRUCTIVOS
VIDÉOS INSTRUCTIVES

Operation Tips | Consejos de operación | Conseils d'utilisation

PRE-SCRAP DISHES PLATOS PREVACIADOS TREMPER LA VAISSELLE	DO NOT OVERLOAD RACKS NO SOBRECARGUE LOS CESTOS NE PAS SURCHARGER PAS LES PANIERS	CHECK CHEMICALS COMPRUEBE LOS PRODUCTOS QUÍMICOS VÉRIFIER LES PRODUITS CHIMIQUES	USE COMMERCIAL CHEMICALS ONLY USE SOLO PRODUCTOS QUÍMICOS COMERCIALES UTILISER UNIQUEMENT DES PRODUITS CHIMIQUES COMMERCIAUX	DELIME MACHINE AS NEEDED DESCALCIFIQUE LA MÁQUINA COMO SEA NECESARIO DÉTARTRE LA MACHINE AU BESOIN
---	--	---	---	--